

**MUC20 Antibody (C-term)**  
**Affinity Purified Rabbit Polyclonal Antibody (Pab)**  
**Catalog # AP7830b**

**Specification**

---

**MUC20 Antibody (C-term) - Product Information**

Application	WB, IHC-P-Leica, FC, IF,E
Primary Accession	<a href="#">Q8N307</a>
Other Accession	<a href="#">Q86ST8</a>
Reactivity	Human
Host	Rabbit
Clonality	Polyclonal
Isotype	Rabbit IgG
Antigen Region	654-684

**MUC20 Antibody (C-term) - Additional Information**

**Gene ID** 200958

**Other Names**

Mucin-20, MUC-20, MUC20, KIAA1359

**Target/Specificity**

This MUC20 antibody is generated from rabbits immunized with a KLH conjugated synthetic peptide between 654-684 amino acids from the C-terminal region of human MUC20.

**Dilution**

WB~~1:1000  
IHC-P-Leica~~1:500  
FC~~1:10~50  
IF~~1:10~50  
E~~Use at an assay dependent concentration.

**Format**

Purified polyclonal antibody supplied in PBS with 0.09% (W/V) sodium azide. This antibody is purified through a protein A column, followed by peptide affinity purification.

**Storage**

Maintain refrigerated at 2-8°C for up to 2 weeks. For long term storage store at -20°C in small aliquots to prevent freeze-thaw cycles.

**Precautions**

MUC20 Antibody (C-term) is for research use only and not for use in diagnostic or therapeutic procedures.

**MUC20 Antibody (C-term) - Protein Information**

**Name** MUC20

**Synonyms** KIAA1359

**Function** May regulate MET signaling cascade. Seems to decrease hepatocyte growth factor (HGF)-induced transient MAPK activation. Blocks GRB2 recruitment to MET thus suppressing the GRB2-RAS pathway. Inhibits HGF-induced proliferation of MMP1 and MMP9 expression.

**Cellular Location**

Secreted. Apical cell membrane. Basolateral cell membrane. Cell projection, microvillus membrane

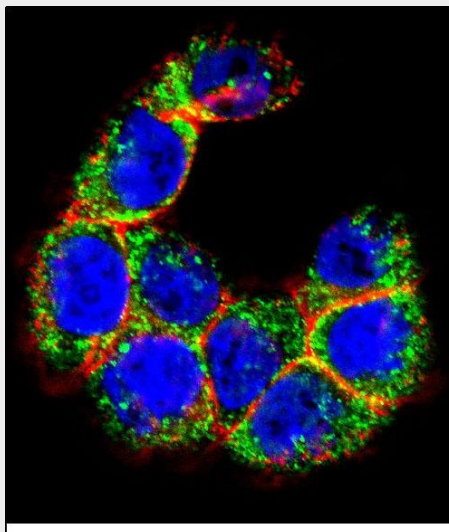
**Tissue Location**

Highly expressed in kidney, moderately in placenta, lung, prostate, liver, and digestive system. In the kidney, localized in the proximal tubules but not in the glomerulus or distal tubules Detected in most of the male urogenital tract epithelia, with the exception of epididymis.

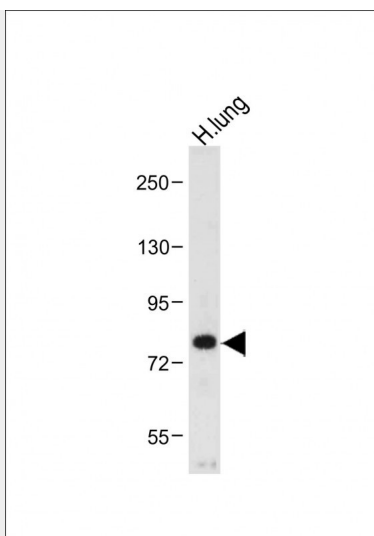
**MUC20 Antibody (C-term) - Protocols**

Provided below are standard protocols that you may find useful for product applications.

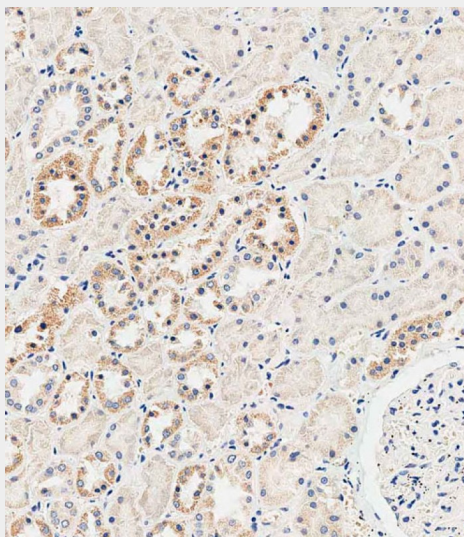
- [Western Blot](#)
- [Blocking Peptides](#)
- [Dot Blot](#)
- [Immunohistochemistry](#)
- [Immunofluorescence](#)
- [Immunoprecipitation](#)
- [Flow Cytometry](#)
- [Cell Culture](#)

**MUC20 Antibody (C-term) - Images**

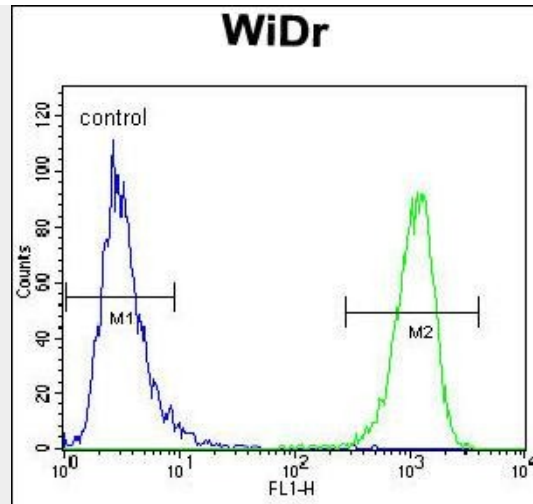
Confocal immunofluorescent analysis of MUC20 Antibody (C-term)(Cat#AP7830b) with WiDr cell followed by Alexa Fluor 488-conjugated goat anti-rabbit IgG (green). Actin filaments have been labeled with Alexa Fluor 555 phalloidin (red).DAPI was used to stain the cell nuclear (blue).



Anti-MUC20 Antibody (C-term) at 1:1000 dilution + Human lung tissue lysate Lysates/proteins at 20 µg per lane. Secondary Goat Anti-Rabbit IgG, (H+L), Peroxidase conjugated at 1/10000 dilution. Predicted band size : 72 kDa Blocking/Dilution buffer: 5% NFDM/TBST.



Immunohistochemical analysis of paraffin-embedded human kidney tissue using AP7830B performed on the Leica® BOND RXm. Tissue was fixed with formaldehyde at room temperature, antigen retrieval was by heat mediation with a EDTA buffer (pH9.0). Samples were incubated with primary antibody(1:500) for 1 hours at room temperature. A undiluted biotinylated CRF Anti-Polyvalent HRP Polymer antibody was used as the secondary antibody.



MUC20 Antibody (C-term) (Cat. #AP7830b) flow cytometric analysis of WiDr cells (right histogram) compared to a negative control cell (left histogram). FITC-conjugated goat-anti-rabbit secondary antibodies were used for the analysis.

### **MUC20 Antibody (C-term) - Background**

This gene encodes a member of the mucin protein family. Mucins are high molecular weight glycoproteins secreted by many epithelial tissues to form an insoluble mucous barrier. The shorter isoform expressed by this gene is localized to the plasma membrane, whereas the longer isoform might be secreted. The C terminus of this protein associates with the multifunctional docking site of the met proto-oncogene and suppresses activation of some downstream met signaling cascades. The protein features a tandem repeat domain that varies between 2 and 6 copies in different individuals. Multiple transcript variants encoding different isoforms have been found for this gene.

### **MUC20 Antibody (C-term) - References**

Li, G., Am. J. Nephrol. 26 (1), 43-49 (2006)  
Suzuki, Y., Genome Res. 14 (9), 1711-1718 (2004)  
Higuchi, T., Mol. Cell. Biol. 24 (17), 7456-7468 (2004)  
Higuchi, T., J. Biol. Chem. 279 (3), 1968-1979 (2004)

### **MUC20 Antibody (C-term) - Citations**

- [Dissecting esophageal squamous-cell carcinoma ecosystem by single-cell transcriptomic analysis](#)
- [Differential effect of rebamipide on transmembrane mucin biosynthesis in stratified ocular surface epithelial cells](#)
- [Expression analysis of the transmembrane mucin MUC20 in human corneal and conjunctival epithelia](#)